

DATA POINT

An item of factual information derived from measurement or research

September 2009



Planning, Research & Effectiveness Department

Applied Science & Technology Building, Office 200

Tel. 486-2369
Fax 486-2646

www.alamo.edu/spc/iprdept

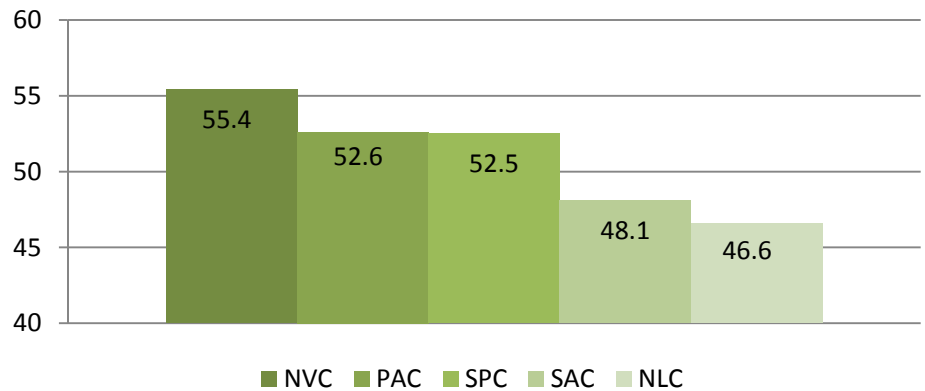
Mecca Salahuddin
Director

msalahuddin1@alamo.edu

Rhonda Johnson
Statistical Research Specialist
rjohnson@alamo.edu

Liz Ehrler
Research Specialist
eehrler@alamo.edu

Alamo Colleges Comparison on the 2009 CCSSE Student Effort Response



2009 CCF SSE Student and Faculty Frequency Distributions

In 2009, selected St. Philip's faculty also took part in the CCF SSE Survey. Here are a few student/ faculty comparisons with significant percentage differences.

		Faculty	Students
How often do students in your selected course section receive prompt feedback (written or oral) from you about their performance	Never	0%	9%
	Sometimes	6%	38%
	Often	44%	38%
How often do you refer students to job placement assistance	Rarely or Never	46%	46%
	Sometimes	34%	8%
	Often	14%	3%
How often do you refer students to academic advising/planning	Rarely or never	15%	36%
	Sometimes	45%	41%
	Often	39%	14%



BENCHMARK #3:
ACADEMIC CHALLENGE

DATA POINT

A Newsletter from the Planning, Research & Effectiveness Department

September 2009

STUDENT EFFORT

In your experience at St. Philip's College during the current school year, about how often have you done each of the following?

	Never	Sometimes	Often	Very Often
Prepared two or more drafts of a paper or assignment before turning it in (N=859)	22.0%	31.2%	29.7%	17.1%
Worked on a paper or project that required integrating ideas or information from various sources (N=860)	12.0%	32.9%	35.0%	20.1%
Come to class without completing readings or assignments (N=856)	32.7%	55.6%	9.0%	2.7%

During the current school year, about how much reading and writing

have you done at St. Philip's?

	None	Between 1 and 4	Between 5 and 10	Between 11 and 20	More than 20
Number of books read on your own (not assigned) for personal enjoyment or academic enrichment (N=850)	25.3%	53.2%	13.5%	4.8%	3.3%

About how many hours do you spend in a typical 7-day week doing each of the following?

	None	1 - 5 Hours	11 - 20 Hours	21 -30 Hours	>30 Hours
Preparing for class (studying, reading, writing, rehearsing, doing homework or other activities related to your program. (N=856)	0.9%	42.2%	28.6%	6.1%	3.0%

Indicate how often you use the following services.

	Don't Know, N/A	Rarely/ Never	Sometimes	Often
Peer or other tutoring (N=833)	22.6%	38.0%	28.7%	10.7%
Skill Labs (N=838)	18.2%	30.6%	27.0%	24.2%
Computer Lab (N=840)	10.6%	23.3%	29.4%	36.8%

Source: 2009 CCSSE Report